

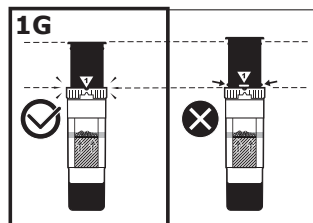
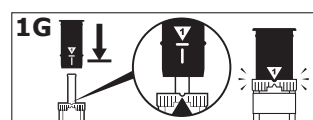
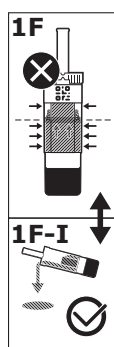
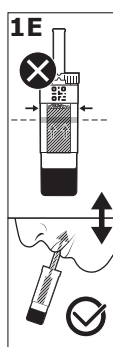
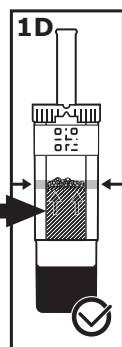
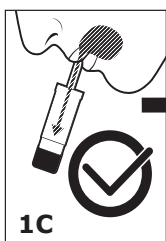
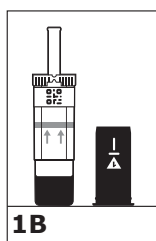
IMPORTANT INFORMATION!

Study SalivaPOD carefully and read all instructions for use before starting. Saliva collection is ideally done in the morning. You must not have eaten, brushed your teeth, or used tobacco products in the 30 minutes prior to sampling.

The SalivaCODE App is recommended as a guide for use.

1A-I If you are using the SalivaCODE App to register the saliva sample with a QR code: Follow all steps in the app the first time you collect the saliva sample.

1A-II If you are using the paper label in the package leaflet: Fill in your name and national ID number with a pen, WAIT UNTIL AFTER THE SAMPLE IS TAKEN, then stick the paper label to SalivaPOD or the test tube.



1B Remove the grey cap and set it aside, do not discard it!

You are now ready for saliva collection. **READ ALL OF 1C BEFORE SLOWLY PRESSING SALIVA INTO THE MOUTHPIECE!**

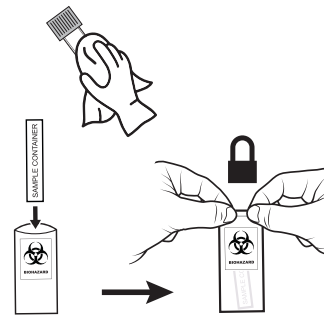
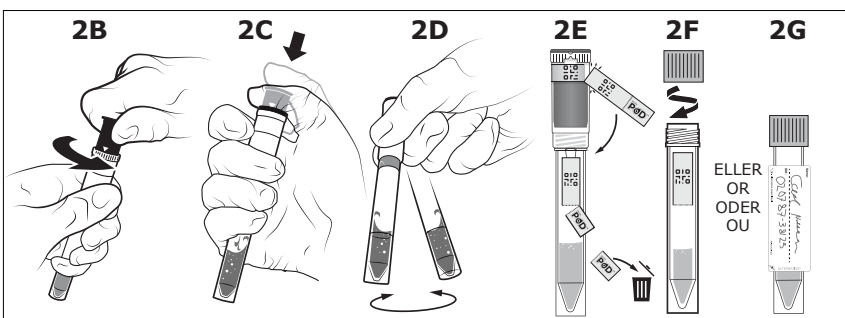
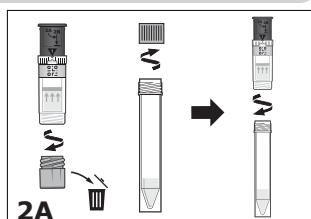
1C Hold SalivaPOD upright. Collect saliva in the front of your mouth and slowly press the saliva into the white mouthpiece.

Repeat several times until LIQUID SALIVA REACHES UP TO THE LINE (1D). Keep track of liquid saliva in the inner tube between each fill. Good lighting helps for visibility.

Avoid air and bubbles, do not blow! Lightly suck back foam at the top of the inner cylinder (1E), or set the test aside for a short while before repeating.

1F IMPORTANT! If too much saliva has entered the outer chamber, it should be removed to avoid spillage. Place the cap back over the mouthpiece with the arrow facing the mark. Press the cap down hard until it stops (1G).

Complete registration in the app or finally stick the hand-written paper label to the SalivaPOD (or the test tube, AFTER completing the steps on page 2). Submit the sample OR go to page 2 if you have received a test tube, disinfectant wipe and/or bag.



With both SalivaPOD™ and a compatible test tube, perform the following:

2A Unscrew both caps. Keep the cap for the test tube. It will be re-used. Assemble the test tube on the bottom of the SalivaPOD™.

Screw the SalivaPOD™ into the test tube.

2B Twist the cap approx. 1cm counter-clockwise.

2C Press the cap all the way down to the bottom of the container.

2D Rotate the test tube to mix the contents.

2E When using the QR code: Tear off one of the QR labels and move this over to the test tube. Finish by tearing off the logo section. If the QR code is damaged, use the spare code.

2F Unscrew SalivaPOD™ from the test tube and tightly screw the red cap onto the test tube.

2G If you are using the paper label, this must be stuck lengthwise onto the test tube AFTER disinfection (2H).

2H If you have received a disinfectant wipe and/or bag: Clean the test tube with the disinfectant wipe BEFORE PUTTING ON THE HAND-WRITTEN PAPER LABEL (1A-II), put the marked sample tube in the bag and seal the bag.